

# Luton Safeguarding Adults Board Strategic Business Plan 2024 - 2026

## INTRODUCTION:

The Luton Safeguarding Adults Board (LSAB) is a statutory partnership of multi-agency partner organisations with the responsibility for safeguarding adults from abuse and neglect in accordance with the requirements of Section 6(7) of the Care Act 2014. The overarching purpose of an SAB is to help and safeguard adults with care and support needs. It does this by:

- assuring itself that local safeguarding arrangements are in place as defined by the Care Act 2014 and statutory guidance
- assuring itself that safeguarding practice is person-centred and outcome-focused
- working collaboratively to prevent abuse and neglect where possible
- ensuring agencies and individuals give timely and proportionate responses when abuse or neglect have occurred
- assuring itself that safeguarding practice is continuously improving and enhancing the quality of life of adults in its area.

The LSAB has three core duties and must:

- develop and publish a strategic plan setting out how they will meet their objectives and how their member and partner agencies will contribute
- publish an annual report detailing how effective their work has been
- commission safeguarding adults reviews (SARs) for any cases which meet the criteria for these.

The work of the Luton Safeguarding Adults Board is driven by the six Care Act (2014) principles and Making Safeguarding Personal through the following 'I' statements:

<b>Empowerment</b>	People being supported and encouraged to make their own decisions and informed consent. <i>"I am asked what I want as the outcomes from the safeguarding process and these directly inform what happens."</i>
<b>Prevention</b>	It is better to take action before harm occurs. <i>"I receive clear and simple information about what abuse is, how to recognise the signs and what I can do to seek help."</i>
<b>Proportionality</b>	The least intrusive response appropriate to the risk presented. <i>"I am sure that the professionals will work in my interest, as I see them and they will only get involved as much as needed."</i>
<b>Protection</b>	Support and representation for those in greatest need. <i>"I get help and support to report abuse and neglect. I get help so that I am able to take part in the safeguarding process to the extent to which I want."</i>
<b>Partnership</b>	Local solutions through services working with their communities. Communities have a part to play in preventing, detecting and reporting neglect and abuse. <i>"I know that staff treat any personal and sensitive information in confidence, only sharing what is helpful and necessary. I am confident that professionals will work together and with me to get the best result for me."</i>
<b>Accountability</b>	Accountability and transparency in delivering safeguarding. <i>"I understand the role of everyone involved in my life and so do they."</i>

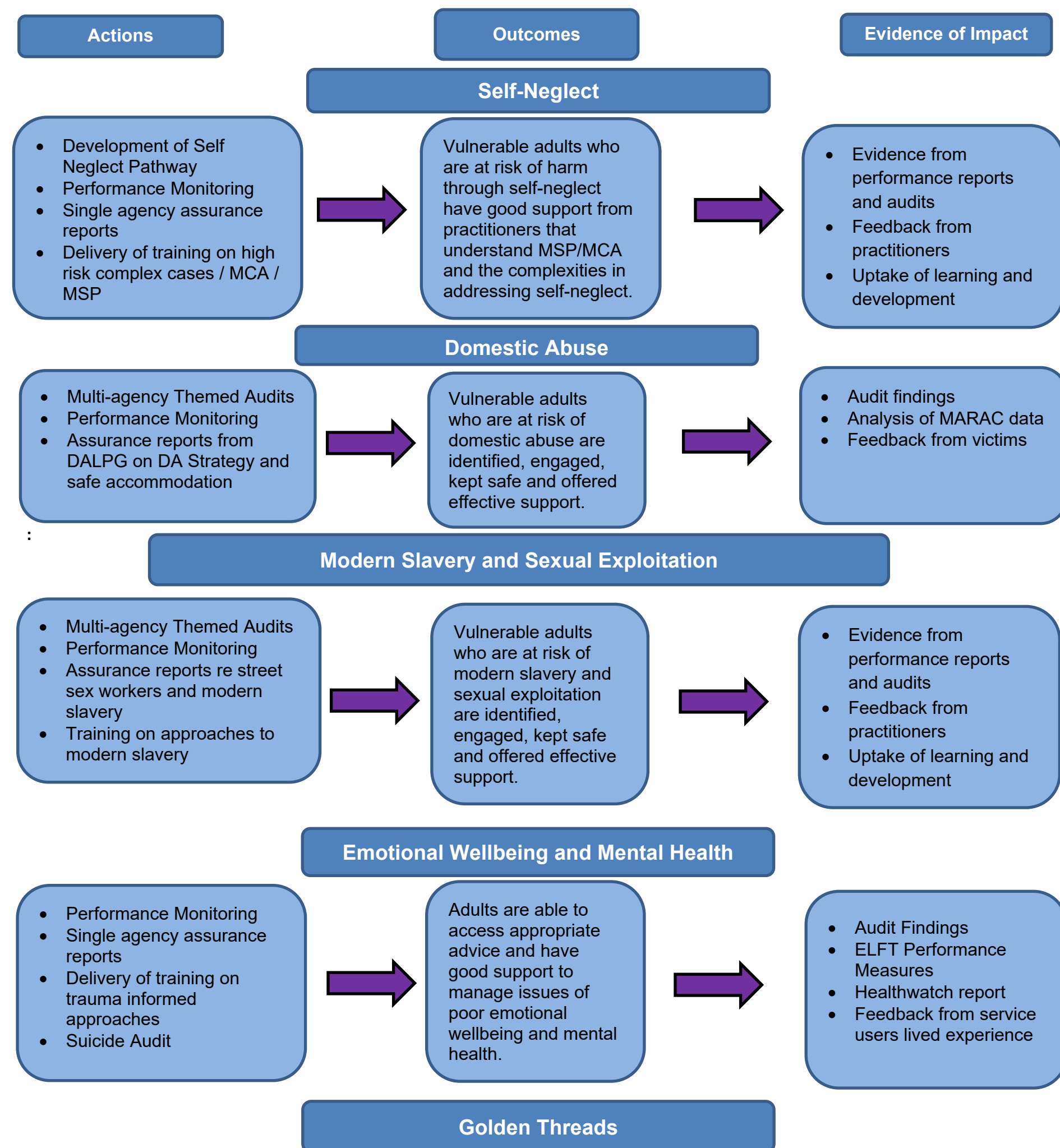
## KEY PRIORITIES:

We have identified four priority areas for us to focus our collective efforts over the next two years, following the principle that we should concentrate our capacity on a small number of topics, in order to have significant impact, and focus our resources. Based on our analysis of the situation across Luton we have identified the following priority areas:

1. **Self-Neglect and Neglect**
2. **Domestic Abuse**
3. **Modern Slavery and Sexual Exploitation**
4. **Emotional Wellbeing and Mental Health**

We have also identified the following Golden Threads that will flow through all our work:

- Application of Mental Capacity Act 2005
- Cultural Competence
- Cybercrime
- Implementing learning from SARs and relevant CSPR's
- Legal Literacy
- Making Safeguarding Personal and responding to personal lived experiences
- Rough Sleeping
- Whole family approaches



**Cultural Competence; Cybercrime; Implementing SAR learning; Legal Literacy; Making Safeguarding Personal and responding to personal lived experiences; Mental Capacity Act; Rough Sleeping; Whole family approach**

- Annual conversation re cultural competence
- Assurance from single Agency Audits to ensure they address the above themes in their analysis
- Assurance reports from relevant sub-groups
- Learning from SARs impact development session
- Multi-agency Audits to ensure they address the above themes in their analysis
- Newsletters, briefings and website articles
- Performance Monitoring of key themes as above
- Provision of learning opportunities including webinars on thematic issues
- Provision of policy, procedure and practice guidance
- Review of learning from national analysis
- Rough sleeping action plan

# Structures to Support Delivery

